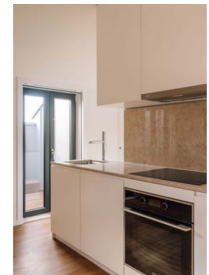




## Alcântara - Apartment



Bedrooms



Bathrooms



Area (m²)

**550 000 €**

(EUR €)

## Charming Apartment with Tagus River View – 65 m² – Bright, Comfortable, and Dual Aspect in Alcântara, Lisbon

### BREATHTAKING VIEW OVER THE TAGUS – CHARMING APARTMENT

Ideal for a single person or a couple. A great rental investment.

Availability: Already available!

Located on Calçada de Santo Amaro, facing south with a spectacular view of the Tagus River, this 65m² apartment in the charming blue building of Santo Amaro 154 combines traditional architecture with contemporary design. The original façade has been preserved, while the interior offers bright, minimalist-style apartments, enhanced by noble materials such as Lioz marble.



**Laura-Lise Baldo**

[l.baldo@unyk-place.com](mailto:l.baldo@unyk-place.com)

**T +351 938726115 <sup>2</sup> • E [info@unyk-place.com](mailto:info@unyk-place.com)**

**Rua Jornal o Louletano, Edifício Nascido do Sol, Bloco B, Loja 5 B, 8100-533 Loulé  
AMI 19927**

<sup>1</sup> (Call to national fixed network) | <sup>2</sup> (Call to national mobile network)



Living in an apartment like this will make you feel like you're traveling without ever leaving home. The attic charm of a Parisian flat, a breathtaking view of a bridge reminiscent of San Francisco's, and below, the Alcântara paddle club whose structure recalls the Sydney Opera House... It's an invitation to escape, while being perfectly nestled in one of the most beautiful capitals in Europe!

This brand-new apartment is a secure acquisition, at a fair price.

#### APARTMENT FEATURES

- ☐ Area: 65m<sup>2</sup>
- ☐ Dual aspect
- ☐ Three south-facing balconies with stunning views of the Tagus
- ☐ One balcony in the bedroom, facing northeast
- ☐ Air conditioning
- ☐ Elevator
- ☐ Fully equipped kitchen with Lioz marble finish
- ☐ Bright and comfortable interior with clean, minimalist aesthetics

#### THE NEIGHBORHOOD – ALCÂNTARA

Alcântara is a very pleasant, cosmopolitan, and vibrant neighborhood, while still being calm and relatively authentic. Very close to Santo Amaro Street, you'll find public transport and local amenities, excellent restaurants, and within less than 10 minutes on foot, you can enjoy a charming riverside walk between the 25th of April Bridge and Belém. The advantage of this neighborhood is that it's close to the city center (just a few minutes by car), and also to all major roads (quick access to the bridge heading south, highways to the north), all without suffering from noise.

- ☐ Lx Factory – 400 m
- ☐ Pestana Palace Hotel\*\*\*\*\* – 200 m
- ☐ Doca de Santo Amaro – 600 m
- ☐ MAAT & Belém Cultural Center – < 2 km
- ☐ CUF Tejo Hospital – 1 km
- ☐ Airport – 10 km
- ☐ Caparica and Carcavelos Beaches – 15 km

📞 Contact us to schedule a visit and discover this exceptional place in the heart of Lisbon.  
Warning: Visiting might make you fall in love!

**Laura-Lise Baldo**[l.baldo@unyk-place.com](mailto:l.baldo@unyk-place.com)**T +351 938726115 <sup>2</sup> • E [info@unyk-place.com](mailto:info@unyk-place.com)****Rua Jornal o Louletano, Edifício Nascido do Sol, Bloco B, Loja 5 B, 8100-533 Loulé  
AMI 19927**<sup>1</sup> (Call to national fixed network) | <sup>2</sup> (Call to national mobile network)



## Property Features

- Air conditioning
- Proximity: Restaurants, City, Hospital, Public Transport, Schools
- Private condominium
- Lift
- Quiet Location
- Solar orientation: South
- Equipped kitchen
- Built year: 2025
- Views: River view, City view, Garden view
- Double glazing
- Uninterrupted views
- Balcony



**Laura-Lise Baldo**

[l.baldo@unyk-place.com](mailto:l.baldo@unyk-place.com)

**T +351 938726115 <sup>2</sup> · E [info@unyk-place.com](mailto:info@unyk-place.com)**

**Rua Jornal o Louletano, Edifício Nacer do Sol, Bloco B, Loja 5 B, 8100-533 Loulé  
AMI 19927**

<sup>1</sup> (Call to national fixed network) | <sup>2</sup> (Call to national mobile network)