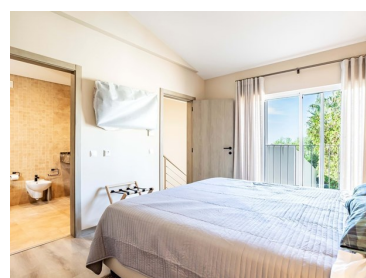
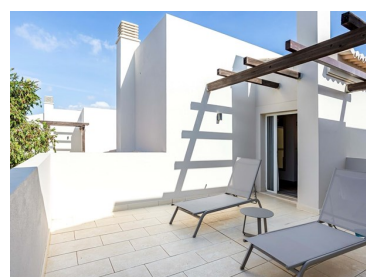




Lagoa e Carvoeiro - Villa



2 Bedrooms
2 Bathrooms
109 Area (m²)
148 Land Area (m²)
 Swimming Pool

395 000 €
(EUR €)

Bright T2 Villa at Hibiscus Gardens, Algarve – Ideal for Relaxation!

This T2 semi-detached villa in Hibiscus Gardens combines comfort, security, and modern design in the heart of the Algarve. Featuring 2 bedrooms, 2 bathrooms, 2 floors, a spacious terrace, and a private garden, this villa provides the ideal retreat for those seeking a peaceful lifestyle while staying close to vibrant attractions.

Located just a short drive from the Algarve's most stunning beaches, renowned golf courses, and top-notch tennis facilities, the villa offers easy access to everything the region has to offer.

The villa's contemporary layout maximizes space and light, featuring a fully equipped kitchen, a welcoming living area, and cozy bedrooms perfect for relaxation. Set in a secure gated community, the property also includes 24-hour security, private parking, and beautifully landscaped gardens.



Laura-Lise Baldo

l.baldo@unyk-place.com

T +351 938726115 ² • E info@unyk-place.com

**Rua Jornal o Louletano, Edifício Nascido do Sol, Bloco B, Loja 5 B, 8100-533 Loulé
AMI 19927**

¹ (Call to national fixed network) | ² (Call to national mobile network)



Residents enjoy access to three communal swimming pools, a playground, and an on-site café, creating a perfect blend of leisure and convenience. Whether you're looking for a holiday home or a high-potential investment property, this T2 semi-detached villa offers an unparalleled lifestyle in one of the Algarve's most desirable locations. Don't miss this opportunity to make it yours!

Property Features

- Air conditioning
- Proximity: Airport, Beach, Golf course, Hospital, Public Swimming Pools, Playground
- Terrace
- Floors: 2
- Parking space
- Balcony
- Pool
- Garden
- Furnished
- Views: Garden view
- Energetic certification: B



Laura-Lise Baldo

l.baldo@unyk-place.com

T +351 938726115 ² • E info@unyk-place.com

**Rua Jornal o Louletano, Edifício Nascido do Sol, Bloco B, Loja 5 B, 8100-533 Loulé
AMI 19927**

¹ (Call to national fixed network) | ² (Call to national mobile network)